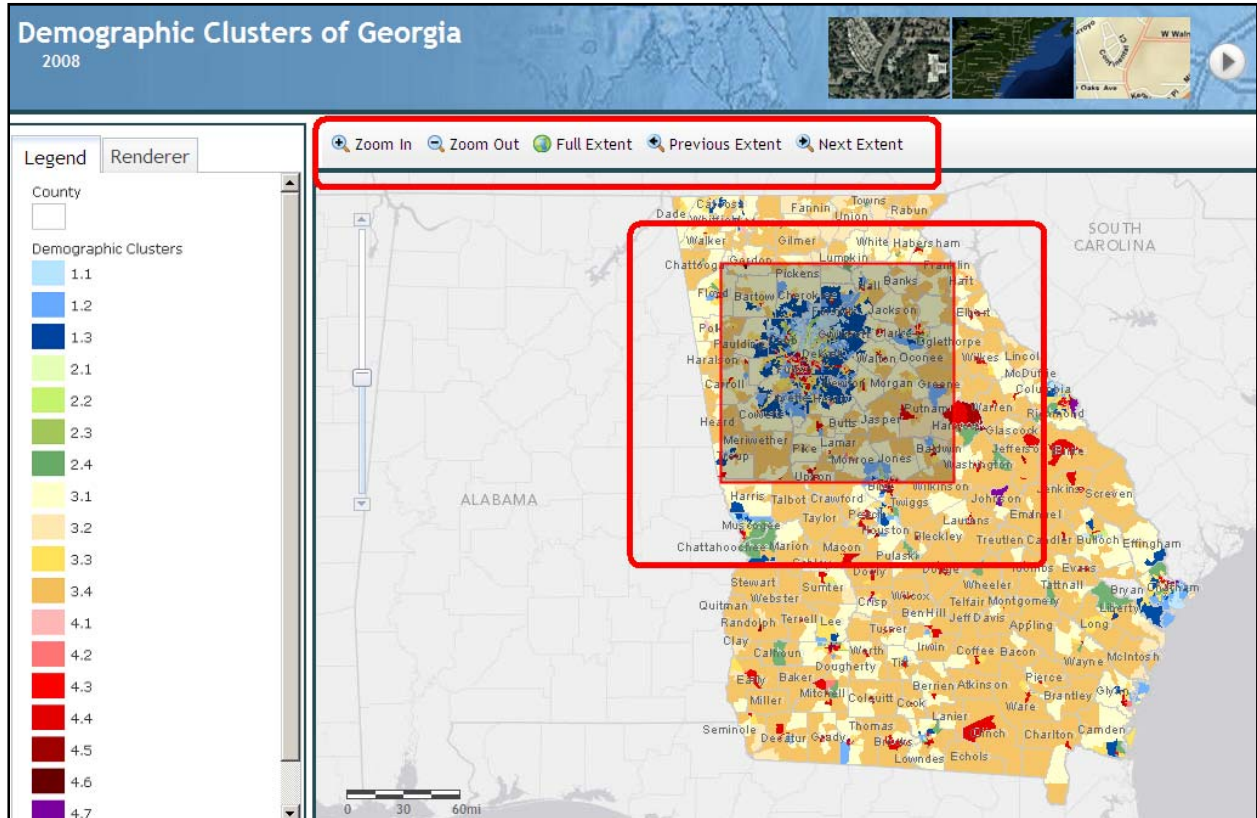
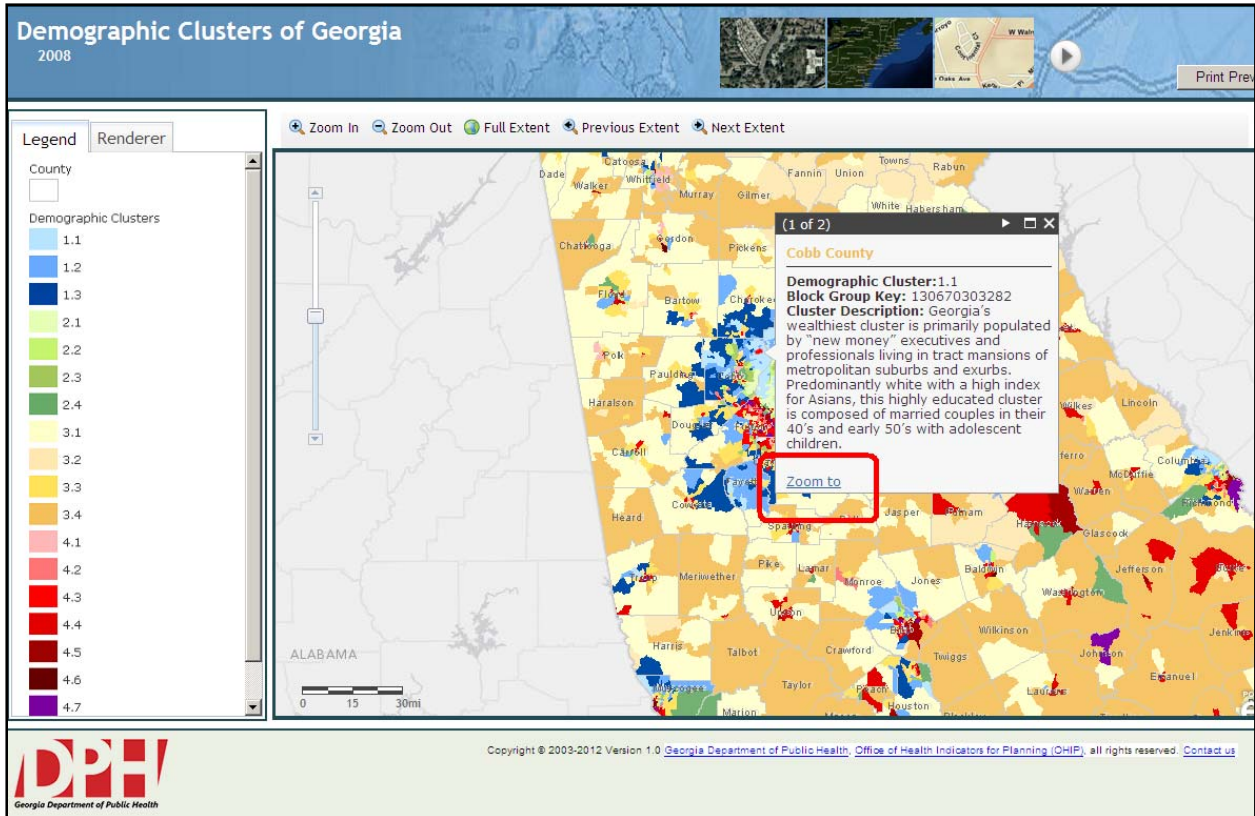


# Demographic Clusters of Georgia

- 1) Use the Navigation Tools to interact with the map. Scroll the mouse wheel to zoom in and out.



- 2) Click on the Map to get more information about the demographic clusters. Click on Zoom To link to zoom in to the selected Census Block Group extent.



3) Click on Renderer tab to change the opacity of the Demographic Clusters map.

Demographic Clusters of Georgia  
2008

Legend **Renderer**

Opacity:

Select Demographic Cluster(s):

- All Clusters
- 1.1
- 1.2
- 1.3
- 2.1
- 2.2
- 2.3
- 2.4
- 3.1
- 3.2

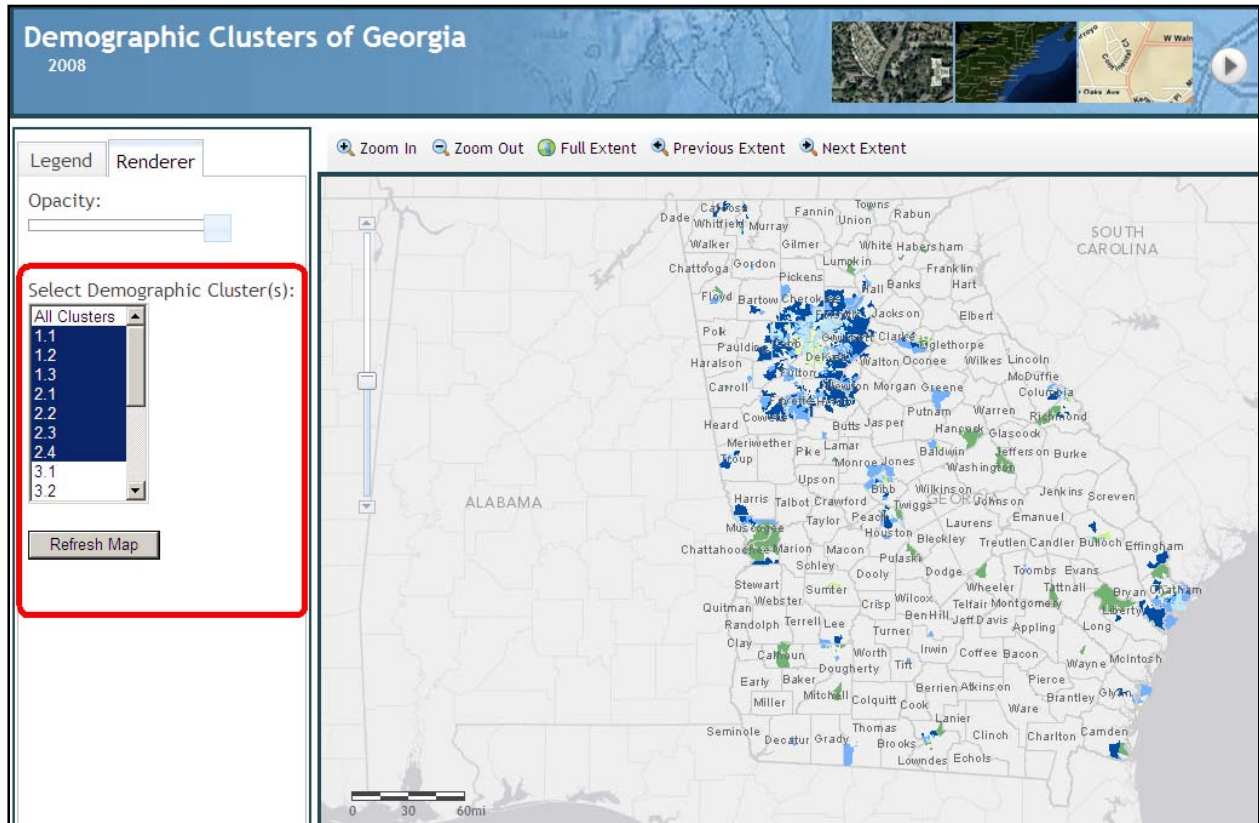
Refresh Map

Zoom In Zoom Out Full Extent Previous Extent Next Extent

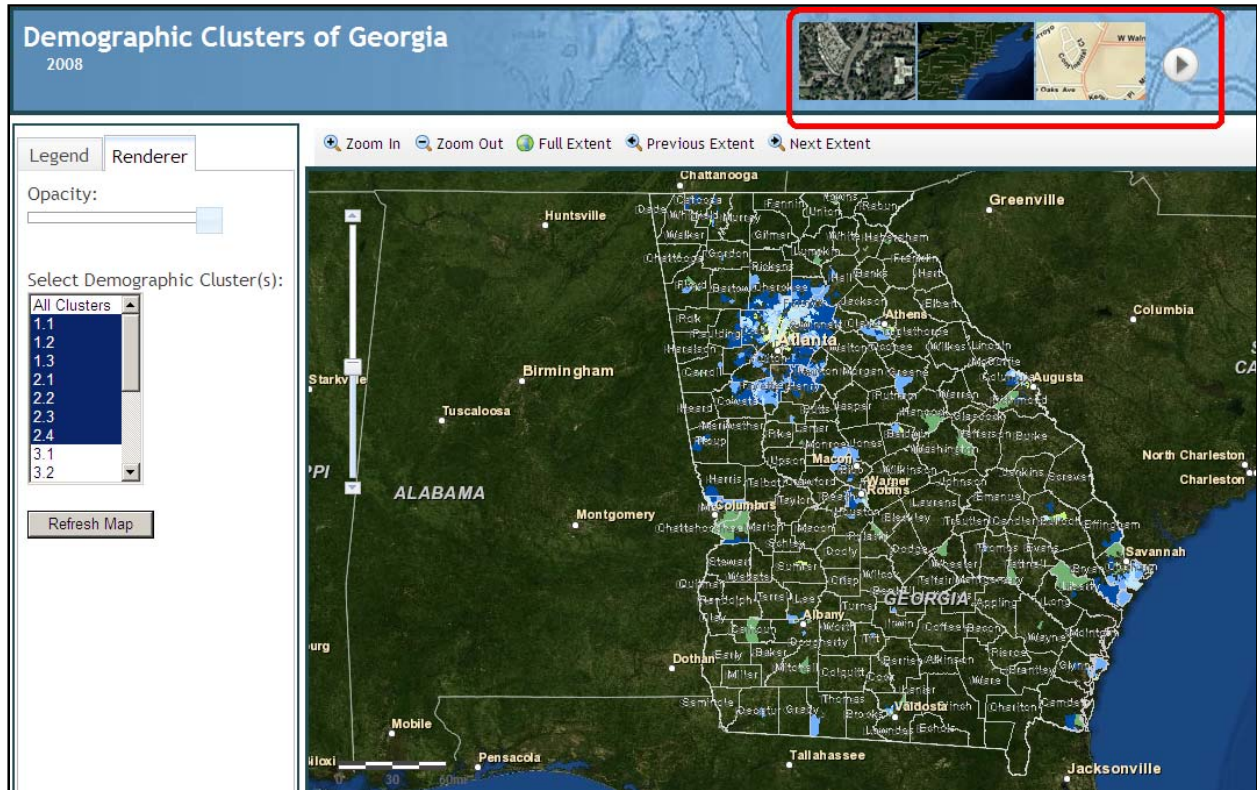
ALABAMA

0 15 30mi

- 4) From the Demographic Cluster(s) list box, select some demographic clusters and click Refresh Map button to render selected census block groups. The example below is only displaying demographic clusters from 1.1 through 2.4.

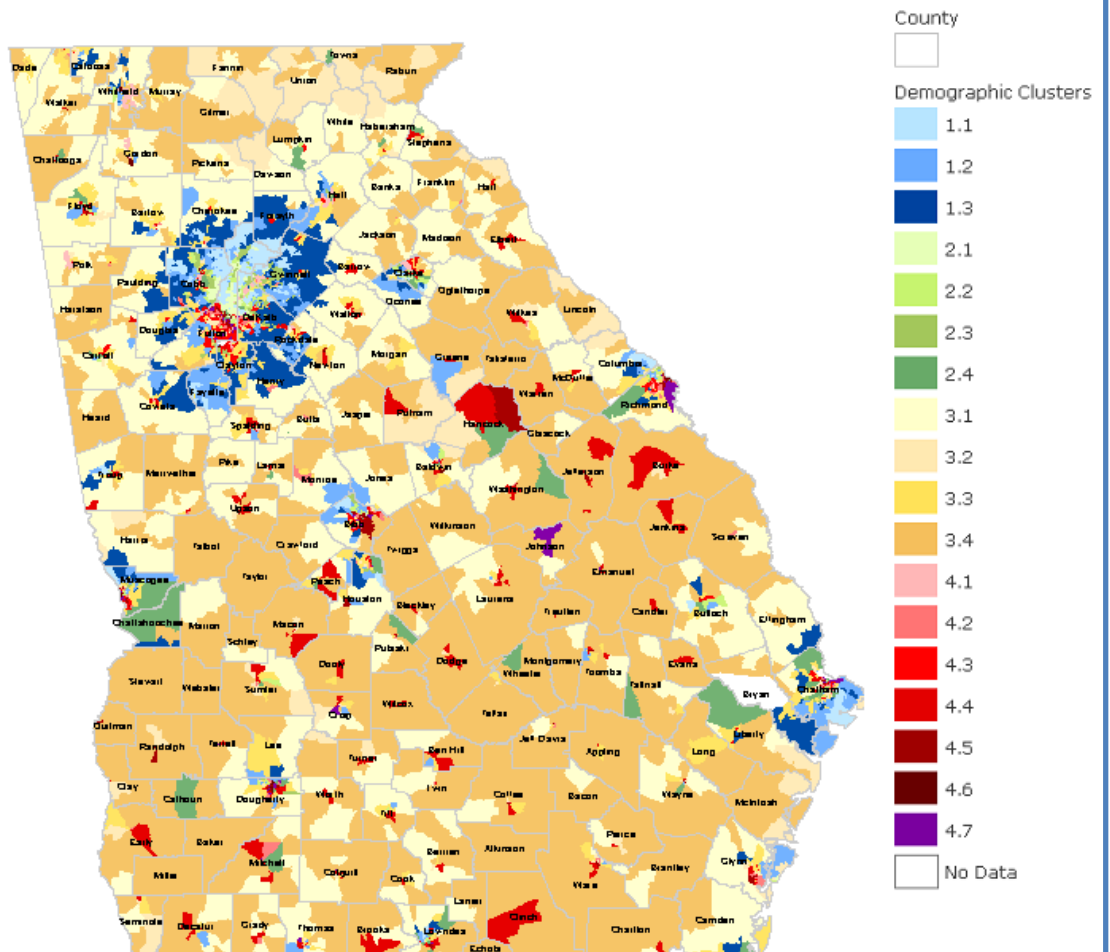


5) Click on base map gallery to change the reference layer



6) Click on Print Preview button to get a printable document.

## Demographic Clusters of Georgia



Copyright © 2003-2012 Version 2.9.2 CV: 1.6 [Georgia Department of Public Health, Office of Health Indicators for Planning \(OHIP\)](#), all rights reserved. [Contact us](#)